

A glowing lightbulb is centered in the frame. A bright blue horizontal banner is superimposed over the middle of the bulb, containing the text 'JPS RESTORATION UPDATES'. The date '2025 November 21' is printed in white across the top of the bulb's glass part. The background is dark, and the light from the bulb creates a soft glow on the surface below it.

# JPS RESTORATION UPDATES

2025 November 21

The logo for 'OUR' is located in the bottom right corner. It features the letters 'O', 'U', and 'R' in a bold, white, sans-serif font. The letter 'U' is stylized with a dotted pattern inside its upper curve. A thin blue horizontal line is positioned above the logo.

**OUR**

# HIGHLIGHTS

---

Since the passage of Hurricane Melissa, service restoration has progressed to approximately 71 percent of customers.



# RESTORATION STATUS

- The Worthy Park Estate in Clarendon is now back in operation.
- The NWC Pump in Lluidas Vale, St Catherine, has been restored.
- In St Ann, several key facilities have been re-energised, including Ferncourt High School, the Claremont Police Station, the Claremont Courthouse, the NWC Pump, four cell towers, and the surrounding town centre.
- In Manchester, restoration has been completed at the Warwick NWC Pump, the Southern Regional Health Authority facility, and the PikkaPepper Factory.

Parish	Total Customers	% Customers Out
Westmoreland	34,480	93%
Hanover	16,688	81%
St. James	62,405	73%
St. Elizabeth	45,942	58%
Trelawny	20,875	58%
St. Ann	47,058	56%
Manchester	49,155	34%
Clarendon	51,299	19%
Portland	23,137	18%
St. Mary	30,126	14%
St. Catherine	89,033	4%
KSA North	91,524	3%
KSA South	52,110	0%
St. Thomas	21,060	0%
Portmore	52,352	0%
<b>Total</b>	<b>687,244</b>	<b>29%</b>

# RESTORATION STATUS

## Hospitals with Electricity Restored

Electricity has been restored to several key medical facilities islandwide, ensuring continuity of healthcare services and support for critical operations. The following hospitals across multiple parishes have been fully energized :



### Kingston & St. Andrew

- Andrews Memorial Hospital
- Bellevue Hospital
- Bustamante Hospital For Children
- Kingston Public Hospital
- National Chest Hospital (NCH)
- Nuttall Memorial Hospital
- St. Joseph's Hospital
- University Hospital Of The West Indies
- Victoria Jubilee

### St. Catherine & Portmore

- Linstead Hospital
- Spanish Town Hospital

### Manchester

- Hargreaves Hospital
- Mandeville Regional Hospital
- Percy Junior Hospital

### Clarendon

- Chapelton Hospital
- Lionel Town Community Hospital
- May Pen Hospital

### St. Thomas

- Princess Margaret Hospital

### Portland

- Port Antonio Hospital
- Buff Bay Hospital

### St. Mary

- Port Maria Hospital
- Annotto Bay Hospital

### St. Ann

- St. Ann's Bay Hospital

### Trelawny

- Falmouth Hospital

### St. James

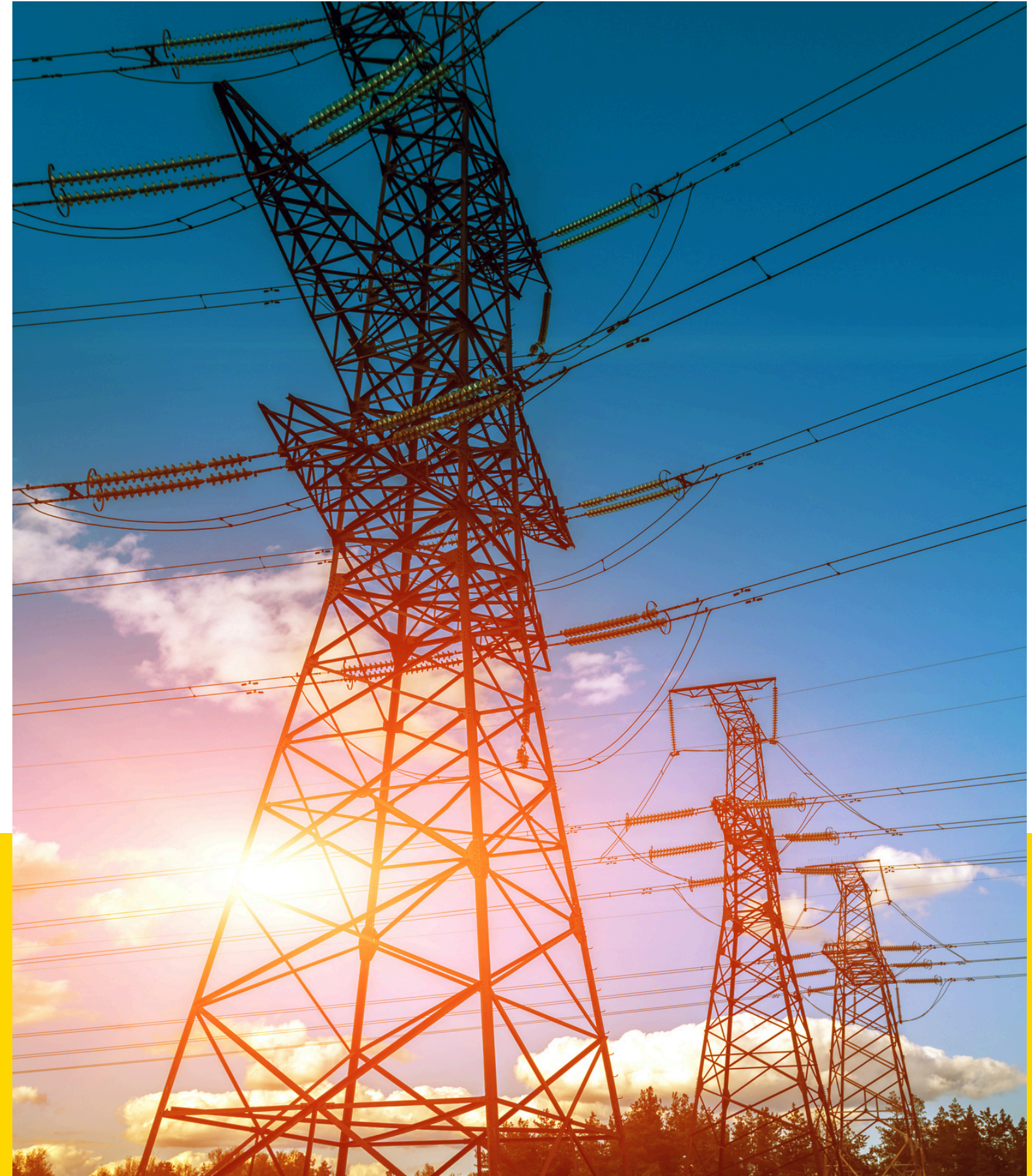
- Cornwall Regional Hospital

# RESTORATION TIMELINE

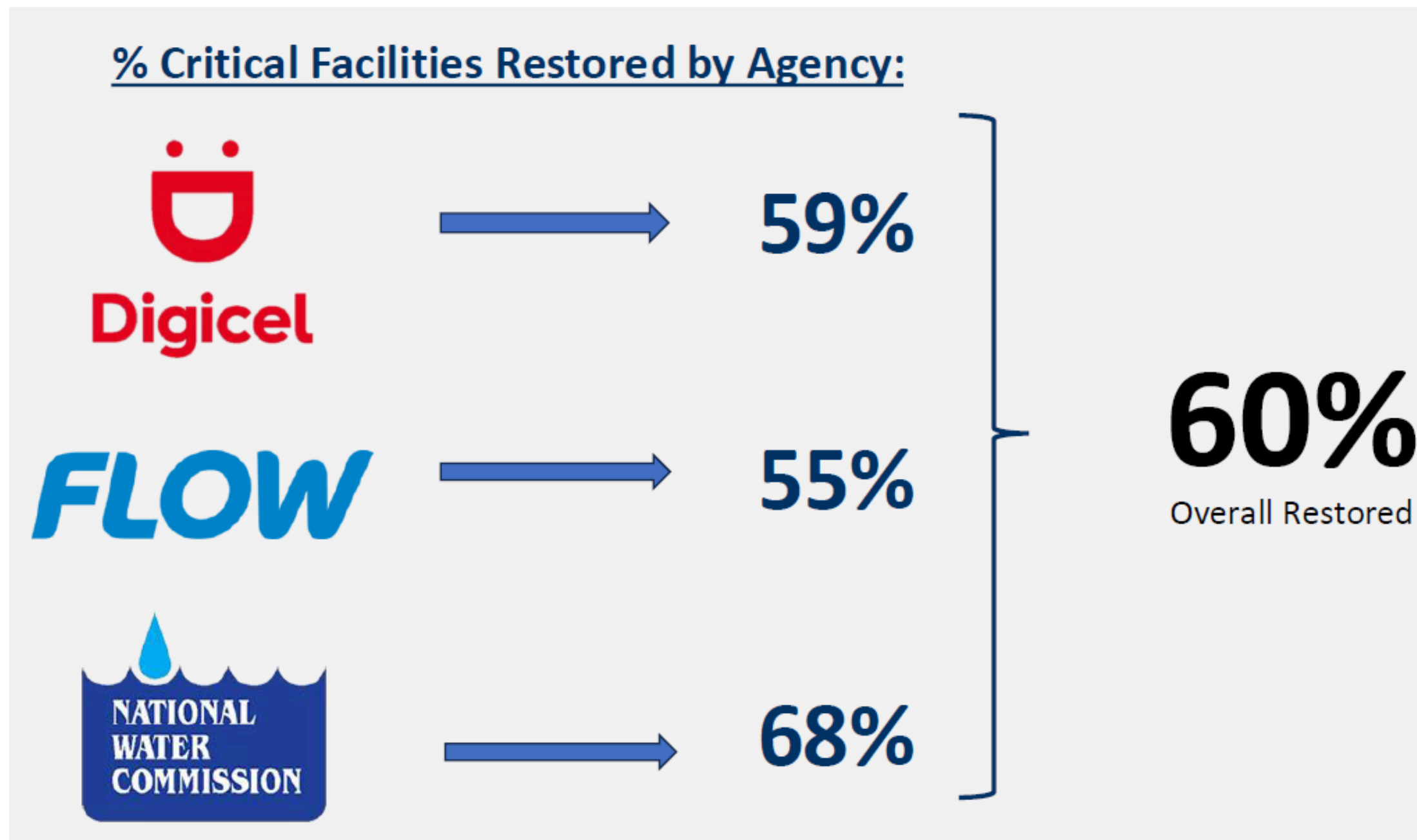
---

## *Damage Assessment Update*

- Transmission: Damage assessment has been fully completed.
- Substations: Damage assessment has been fully completed.
- Distribution: Damage assessment is 99 percent complete.



# SYSTEM STATUS



Restoration of critical facilities across key utility providers continues to advance following Hurricane Melissa. As of the reporting date, approximately 60 percent of all critical sites have been restored islandwide.

Digicel has restored 59 percent of its priority facilities, while FLOW has restored 55 percent. The National Water Commission has achieved the highest level of restoration to date at 68 percent.

# FOLLOW US FOR UPDATES



@ t h e O U R J a m a i c a



@ t h e O U R j a